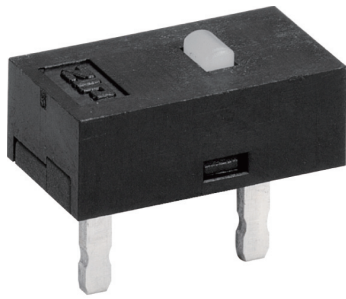
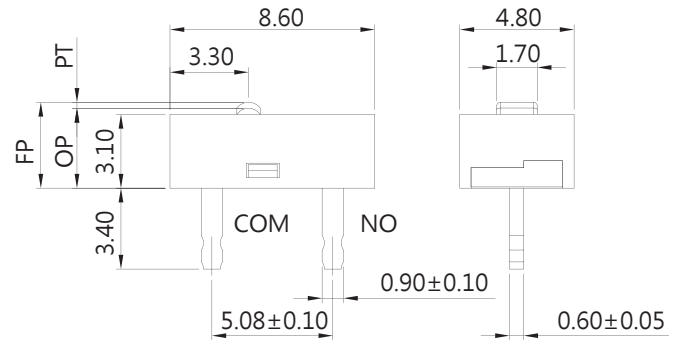


MICRO SWITCHES



DIMENSIONS

Unless otherwise specified, a tolerance of $\pm 0.4\text{mm}$ applies to all dimensions.



DA SERIES

SPECIFICATIONS

Contact Resistance(initial)

Max. 100 m Ω

Measured by ohm meter - open voltage < 1VDC, driver current -100 mA

Insulation Resistance(at 250 VDC / minute)

Min. 100 M Ω

Dielectric Strength

Min. 600VAC(50-60HZ)/minute between Live parts and dead metal parts

Operating Temperature Range

-40°C to 85°C (with no icing)

Vibration

10~55Hz, displacement 0.75 mm(p-p)

Electrical Service Life

Min. 5,000,000 operations

Electrical Operating Frequency

120 operations per minute

Operating application of the switch

Set the switch pushing distance from 60% to 90% of the specified OT value

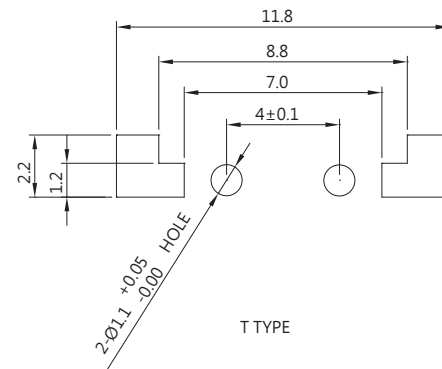
RATING

0.1A 30VDC

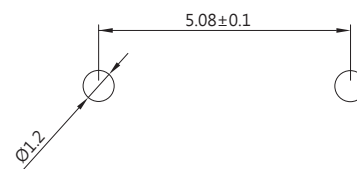
APPLICATIONS

Mouse, Digital Pen

MOUNTING HOLES

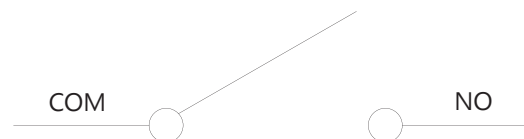


T TYPE

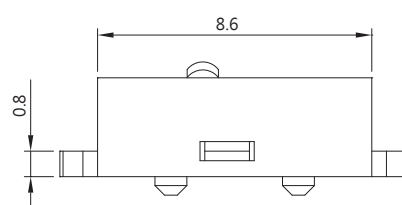


P TYPE

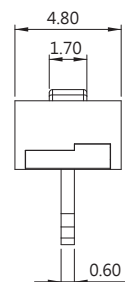
CONTACT CONFIGURATION



TERMINAL TYPES

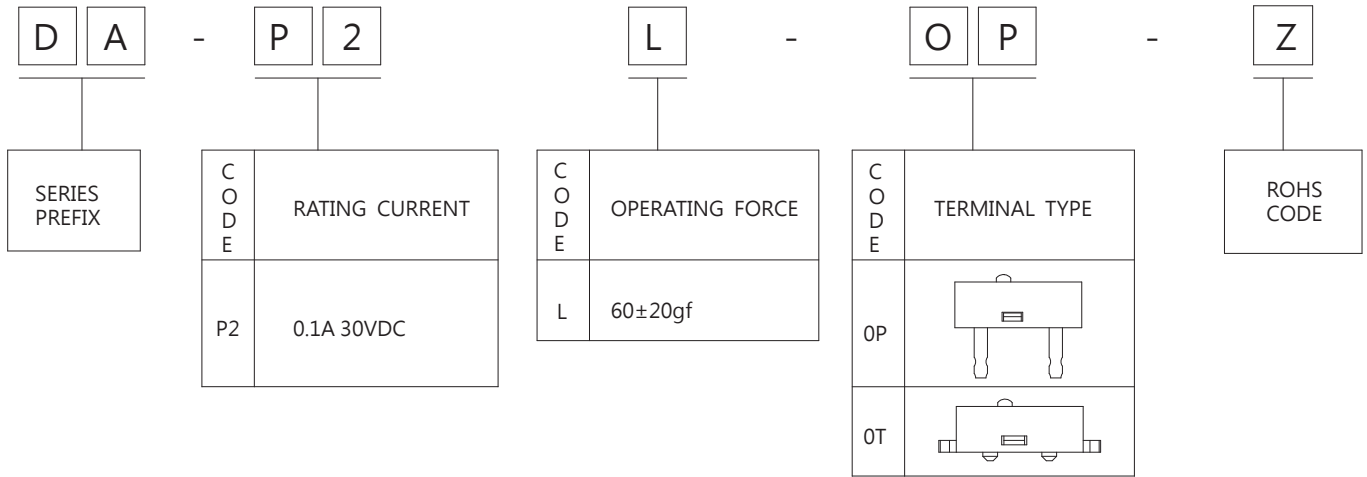


T TYPE



P TYPE

ORDERING INFORMATION



OPERATING CHARACTERISTICS

SWITCH TYPE	PART SUFFIX	OF (gf)	OP (mm)	PT Max. (mm)	OT Min. (mm)	FP Max. (mm)	MD Max. (mm)	RF Min. (gf)
DA-P2L-0 □ -Z		60±20	3.35 ^{+0.2} _{-0.15}	0.65	0.1	3.60±0.15	0.12	20